

# *Achieve the Dream – Remember the Name*

[..\Video Clips\2006 Select  
CampVIDEO\\_TS\VIDEO\\_TS.VOB](#)



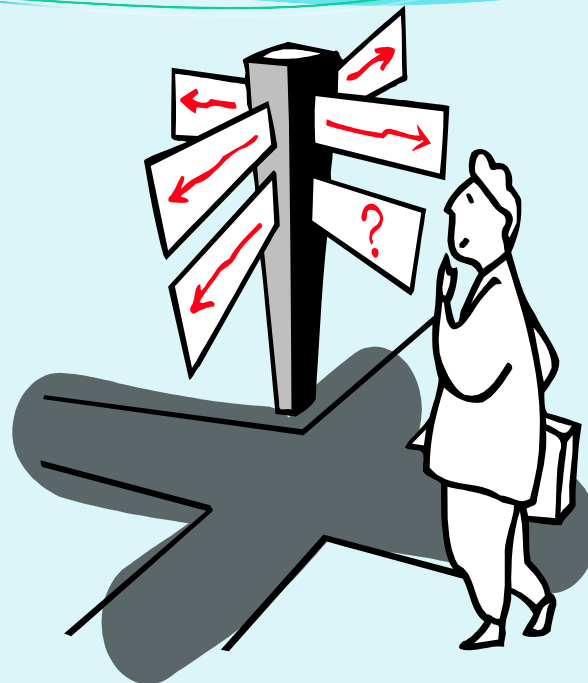
# *Play College Hockey*

..\..\..\My Documents\My Videos\RealPlayer  
Downloads\Play College Hockey.flv



2009

# HOW CAN I ACHIEVE MY HOCKEY DREAM?



**Al Bloomer**  
**USA Hockey Inc.**  
**National Coach in Chief**

# *What is your dream?*



## ➤ **Play NCAA College Hockey**

**Div 1-3**

- **3,716 Male Players (1.0%) 1/100**  
**74.4% U.S. Citizens Ages 18-26**
- **1,847 Female Players (12.5%) ~1/8**  
**76.5% U.S. Citizens Ages 18 -22**

\*\*\*\*\*

- ACHA Div 1-3 - 8,775 Male Players ( 10.0 %) 1/10**
- Div 1-2 - 1,125 Female Players ( 16.7 %) 1/6**

\*\*\*\*\*

- ## ➤ **Play in the NHL - 690 Players ( 0.13%) - 1/800**
- 172 U.S. Citizens (25.0%)**
  - 188 European (27.3%)**
  - 330 Canadian (47.7%)**

Numbers based on 2008 rosters

# *How do I achieve my dream?*

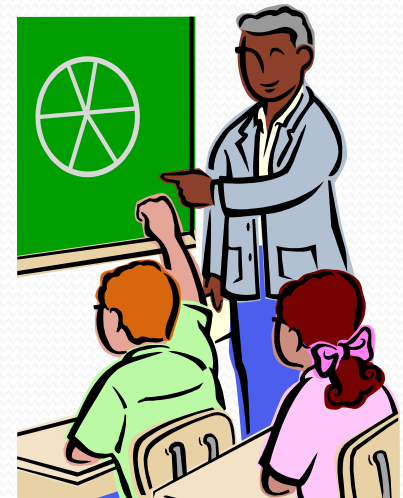
## **Typical Questions:**

- **What is my best route to college hockey? Is there more than one?**
- **Where do I fit?**
- **How important are academics?**
- **What is best for me?**
- **How do I get noticed?**
- **If I am a good player, will they find me?**
- **What role should my coach play?**
- **Is there typical route to the NHL**



# *Getting an Education*

- **Typical Routes to NCAA College Hockey:**
  - Prep School – (72 boys & 56 girls programs +/-)
  - USA & Canadian Junior “A” Hockey – (top 6% ages 15 to 20)
    - 74,000 U.S. & 167,000 Canadian – Boys
    - 9,000 U.S. & 24,980 Canadian - Girls
  - Public High School – sanctioned /accredited
  - USA Hockey Midget Tier 1 (ages 18 & under)
    - 27,330 U.S. & 73,000 Canadian - Boys
    - 3,128 U.S. & 12,512 Canadian - Girls



# ***FACTORS TO CONSIDER WHEN SELECTING YOUR ROUTE TO COLLEGE HOCKEY***

- Academic Impact – NCAA eligibility
- Reputation of the Program – History
- Recruiting foot print
- Location – you should visit before committing
- Cost – Direct & Indirect
- Be Realistic – play or watch
- Are they ***really*** interested in you?
- Social Aspects
- Coach

***Beware Major Junior( CHL) will impact NCAA eligibility***

# *What You Need To Know about Major Junior - CHL*

- Playing in a CHL game after your expected High School Graduation year makes you permanently ineligible to play NCAA Hockey
- Playing 1 game of Major Junior makes you ineligible for one year...*exhibitions* are included in this rule.
- If you go to a Major Junior Camp...you can stay only 48 hours on their dime.
- Goalies...dressing is playing
- Signing a contract with an agent makes you ineligible

# ***WHAT IS IMPORTANT TO THE COACH***

- Academics - note for every *Athletic* Scholarship \$  
there are 12 *Academic* scholarship \$s
- Passion & Purpose – “Hungry Spirit”
- Mental Toughness & Discipline
- Training – Nutrition – Strength
- Practice habits – “coach-ability”
- Respect
- Skills
- Hockey Sense
- Team Player – accept your role
- ***Character Counts***



# ***WHY COLLEGE HOCKEY?***

## ➤ The Stability

## ➤ The Development Model

- Practice vs. game
- Off ice training / development
- Coaching staff
- Facilities
- NHL / Europe / USA



## ➤ Education...College Degree ... Identifies the door of Opportunity \$\$\$\$\$\$\$\$\$\$

## ➤ Life long friendships...Network

## ➤ Social Experience



## *181 NCAA College Hockey programs - 2008*

<b>SAT Scores – (Verbal + Math only)</b>	<b>Number of Schools you Qualify for</b>	
1400 +	181	Avg ACT 31 +
1200 to 1299	153	
1100 to 1199	115	
1000 to 1099	75	
900 to 999	17	Avg ACT 17

**If you need academic reinforcement or rehabilitation, perhaps you should consider Prep, Post Graduate School or Jr. College.**

Note Quality Points from Core Courses added to ACT. The lower your QP the higher your test scores need to be.

# *NCAA Players 2007-2008– Male Players*

## *What states do they come from?*

- Division 1 Men --- 1,573 players
  - Minnesota - 13.2%
  - Ontario - 12.5%
  - Michigan - 9.6% } 50.3%
  - Massachusetts – 7.8%
  - Alberta – 7.2%
- Division 3 Men – 2,143 players
  - Massachusetts – 16.9%
  - Minnesota – 14.8%
  - New York – 8.9% } 54.8%
  - Ontario – 8.9%
  - Michigan – 5.3%

# *NCAA Players 2007-2008– Male Players*

## *What programs do they come from?*

Program	Division 1	Division 2	Division 3	Total
NEPSAC & PS	282	<b>85</b>	<b>490</b>	<b>857</b>
NAHL – Jr II	251	1	187	439
USHL – Jr I	<b>343</b>	0	30	373
EJHL – Jr III	142	22	184	348
High School	24	35	254	313
OPJHL – Ont II	98	1	132	231
BCHL- BC II	171	0	54	225
AJHL – Alb II	91	0	22	113
CJHL – Ont II	48	1	39	88
AtJHL – Jr III	9	11	53	73
ACHA Transfer	4	0	4	8

This represents ~ 82.56 % of 3,716 players on NCAA rosters

# *NCAA Players 2007-2008 – Female Freshman*

## *What states do they come from?*

- Division 1 Women – 776 players
  - Minnesota – 17.7%
  - Ontario – 15.7%
  - Massachusetts – 7.4% } 58.5%
  - Alberta – 6.0%
  - New York – 5.4%
- Division 3 Women – 1,070 players
  - Minnesota – 21.8%
  - Massachusetts – 13.8%
  - Ontario – 8.7% } 53.5%
  - Michigan – 4.6%
  - Wisconsin – 4.6%



# ***NCAA COLLEGE HOCKEY***

## **Division 1 – 58 Men & 34 Women Programs**

- 1,575 males ( 1/300 ~ 0.33%) & 776 females (1/8 ~ 12.0%)
- Top **380** male players in a given year ( 18 to 21)
- HEA, ECACHL, AHA, CHA, WCHA, CCHA
- 18 full scholarships per team – maximum (1/450 -0.22%)  
~190 new scholarships each year
- Operating budgets \$875 M to \$ 2 MM– average \$ 1.1MM
- Must go through ***NCAA Clearing House – Eligibility Center -16***
- 7 contacts / evaluations – Sr. year ( 5 official visits)
- Can receive materials after September 1 – senior year
- 34 games per year
- 30 players on roster ~ 65% males & 62% females U.S. Citizens
- Full time professional coaching
- NCAA National Championship

# ***NCAA COLLEGE HOCKEY***

## **Division 2 – 7 Men & 2 Women programs**

- 202 males & 48 females per year
- ECAC, Northeast 10, IND
- 13.5 full male scholarships & 18 full female scholarships per team
- Top 300 male players in a given year (18-21) ( 680)
- Must go through **NCAA Clearing House – Eligibility Center - 14**
- Contact June 15 before beginning of senior year
- 5 official visits
- 30 games per year
- 22 to 25 players on roster
- Full time professional coaching
- Similar to Division 1 - but no NCAA National Champion

# ***NCAA COLLEGE HOCKEY***

## **Division 3 – 70 Men & 50 Women programs**

- 2,143 males & 1,070 females
- NESCAC, MIAC, ECAC, SUNYAC, NCHA, IND
- No athletic scholarships
- Operating budget average \$250 K
- Top 600 USA male players in given year (18-21) (1280)
- Official visits – only one per school
- Unlimited contacts
- One expense paid official visit
- Very large recruiting class ~~~ 75
- 28 games per season
- 30 to 35 players on roster
- Full time professional coaching
- NCAA National Championship

# ***NCAA COLLEGE HOCKEY***

## **NJCAA – Junior College – 8 men programs**

- 220 players +/-
- 25 to 30 players on roster
- 16 scholarships per team – lower tuitions
- Open recruiting
- National Champion
- Tier 1 Midgets and most Tier 2 Midgets can play at this level

# ***NCAA COLLEGE HOCKEY***

## **ACHA – Non Varsity College Hockey**

- Since 1991
- Division 1 -- 53 men & 17 women programs
- Division 2 – 169 men & 28 women programs
- Division 3 – 129 men programs
- 25 to 30 players on playing roster
- Part-time coaching staff - varies
- Members of USA Hockey – 501 c 3
- Standard college admission process
- Tuition based \$\$ varies from program to program
  - Range from \$0 to \$2,500 - Average \$ 1,000 to \$1,500
- ACHA / NCAA National Championship
- National Team – World University games
- Tier II Midgets can play at this level (1 /10 ~ 10%)



# The Roster Facts

## Division 1 & 3

- **NCAA Average Roster is 26 – May be as high as 30 players**
  - 0.5 will play in the NHL
  - 23.5 will graduate from college
  - 2.0 will not obtain a college degree
- **CHL Average Roster is 25**
  - 1.0 will play in the NHL
  - 4.0 will graduate from college
  - 21.0 will not obtain a college degree

# Scholarship Comparison

- NCAA \$\$ agreed upfront – one year agreement
- NCAA = **\$140,000.00** (4 x \$35,000.00)
- CHL \$ post career
- CHL = **\$26,000.00** (4 x \$6,500.00)

## Scholarship -- What if ???

- NCAA once given can not be reduced or terminated based on athletic performance. Injury keep scholarship.
- CHL if you are cut prior to October 10<sup>th</sup> nothing guaranteed. Cut before January 10<sup>th</sup> you qualify for 50% of school money

## *Academics*



A ten year study recently completed...

- **16%** of CHL(major junior) alumni have earned a college degree
- **84%** of NCAA alumni have earned a college degree
- Over a four year period NCAA Hockey produces 1387 college graduates compared to just 236 for the CHL

# The Draft

## The Last Three NHL Drafts

- 33% NCAA
  - 2006 Draft – 59 USA Players overall ( 18 NCAA – 3 in 1<sup>st</sup> Round)
  - 2007 Draft – 62 USA Players overall ( 11 NCAA – 1 in 1<sup>st</sup> Round)
  - 2008 Draft – 43 USA Players overall ( 9 NCAA - 1 in 1<sup>st</sup> Round)
- 44% CHL
- 23% European

**Just the Beginning**

## ***Making It to the NHL***

- Roughly **50%** of NHL first round selections make it to the NHL.
- **15%** of the second round plays in the NHL
- **5%** of the rest of the draft will eventually make it on a NHL roster.
- **16%** of the players in the **NHL are undrafted**
- **3.7% of NCAA Players** per year will play **professional hockey**



# ***KEYS TO GETTING NOTICED - SUMMARY***

- Be academically attractive
- Select a good skill development program
- Select a program with a history of moving players to the next level.
- Target recruiting area(s)
- Your **coach** must be your strongest advocate
- Alumni speak on your behalf
- Participate in USAH District & National Tournaments
- Participate in USAH District & National Camps
- Pick commercial camps carefully – skill vs. games, staff and record of alumni
- Give your best at all times – you never know who is watching

# College Hockey...Live it



# ***REFERENCES***

Thomas Keegan – College Hockey Guides 2008/2009

[www.nhl.com](http://www.nhl.com)

[www.ncaa.org](http://www.ncaa.org)

[www.usahockey.com](http://www.usahockey.com)

[www.achahockey.org](http://www.achahockey.org)

[www.collegehockey.com](http://www.collegehockey.com)

[www.prephockey.org](http://www.prephockey.org)

[www.playcollegehockey.com](http://www.playcollegehockey.com)

Rae Briggie - USAH Assistant Executive Director, Member Services

Scott Borek – University of New Hampshire – NCAA Hockey vs. CHL

Jeff Sauer – former Head Coach University of Wisconsin

Jim Johannson – USAH Assistant Executive Director, Hockey Operations

Al Bloomer – Opportunities in Hockey - 2008

***THANK YOU & GOOD LUCK!***